

Allegan County 4-H

Horsemaster Level Two

NAME: _____ 4-H AGE _____ ID# _____

ADDRESS: _____

CITY: _____ ZIP _____

PH# _____ CLUB _____

NAME: _____ LEADER'S NAME _____



MSU is an affirmative-action, equal-opportunity employer. Michigan State University Extension programs and materials are open to all without regard to race, color, national origin, gender, gender identity, religion, age, height, weight, disability, political beliefs, sexual orientation, marital status, family status or veteran status.

ALLEGAN COUNTY 4-H HORSEMASTER PROGRAM

Level Two

Introduction: Upon passing Level One, you have learned to safely ride your horse or pony with some confidence. You have learned safety around horses and basic care, feeding and housing of your horse. You can control your horse or pony with reasonable skill at the walk, trot, stop, back, circle and reverse.

In Level Two you will build on your knowledge base of care and feeding, good health for your horse, and learn about the different breeds of horses and ponies. You will learn more about how the aids work and how to put them to better use. You will learn to identify various parts of the horse and riding equipment. You and your horse or pony will develop a unique partnership as you understand more about the horse's nature and develop better balance. You will be introduced to the canter/lope and begin to understand proper leads.

To complete Level One, each 4-H Member should be able to:

- Earn 85% or higher score on the written portion and unmounted skills section.
- Know how to perform and complete the riding evaluation with minimum passing score of 5 for each skill evaluated and an overall, minimum score of 75%.

HORSE SENSE (Theory)

- Become familiar with 4 breeds of horses or ponies and their distinguishing characteristics.
- Identify a minimum of 30 parts of the horse.
- Describe the basic colors and markings of horses and ponies
- Common diseases/ailments of horses and ponies: **Colic, Thrush, Founder, Parasites**

- Horse terms every 4-Her should know:

- | | | | |
|--------|-----------|---------------|----------------------|
| • Dam | • Hands | • Haunches | • Jog/Trot |
| • Sire | • Sound | • Forehand | • Farrier |
| • Pony | • Blemish | • Grade horse | • Veterinarian (DVM) |
| • Tack | • Brand | • Canter/Lope | |

UNMOUNTED INSTRUCTION

- Safely catch and handle an unaltered horse or pony, lead and secure (tie) correctly
- Properly tie your horse or pony
- Steps in routine grooming, frequency
- Cleaning/care of the feet
- Grooming of the body, mane and tail hair
- Know the parts of the saddle and bridle
- Saddle and bridle a horse or pony correctly, assistance may be necessary

ACTIVITIES

1. Complete Feed Chart and Maintenance Record
2. Complete Project Animal Activity Participation Log
3. Complete Personal Story

MOUNTED SKILLS (Choice of seat optional)

- Mount and dismount From the ground
- Correct use of mounting block
- Correct way to give a “leg up”.
- Correct seat/posture in saddle, pick up & hold reins correctly
- Balance of horse and rider.
- English – introduction to proper diagonals. Western – be able to identify correct diagonals.
- Smoother transitions from walk to trot and trot to walk Improve circles, turns and reverses at walk and trot.
- Ride a trot/jog without breaking gait.
- Backing and stopping
- Simple obstacles at a walk and trot.
- Ride, walk, trot, canter/lope with reasonably good equitation.
- Reverse on the haunches.
- English riders will be able to ride a posting trot, and be introduced to proper diagonals and diagonal changes.
- Ride a trot/jog without breaking gait.
- Back five steps, stop and walk forward.
- Ride two simple trail obstacles at a walk and/or trot/jog.
- With reasonable correct form walk, trot and canter a horse safely and in control.

ALLEGAN COUNTY 4-H HORSEMASTER PROGRAM

HORSE SENSE (THEORY)

MULTIPLE CHOICE (1pt each) – Circle the best answer:

Horses learn to obey because of:

- a.) natural instincts
- b.) cruelty
- c.) reward and punishment
- d.) sugar, carrots and petting

A horse or pony can pay attention to reward and punishment for about:

- a) an hour
- b) three seconds
- c) three minutes
- d) as long as you ask him to

When a rider is said to be in balance with his horse, his center of balance is:

- a) ahead of the motion
- b) behind the motion
- c) up in the air
- d) right over the horse's center of balance.

To ask your horse or pony to canter or lope to the right, you should:

- a) use you left leg behind the girth
- b) use your right leg behind the girth
- c) kick hard with both legs and lean over
- d) hit him with the end of your reins

When riding a canter or lope, a rider should:

- a) post as in a trot
- b) sit down
- c) stand up
- d) lean back

When riding in a show ring with others, you should:

- a) ride side by side with your friends
- b) stay right up against the horse ahead of you
- c) stay 30 feet or more behind the next horse.
- d) stay at least one horse length back of the horse ahead of you and pass if you need.

When the horse is in the proper lead, the rider is looking for:

- a) an extended inside front leg.
- b) an extended outside front leg.
- c) an extended back leg.
- d) both legs together.

Horse Colors

The following is a description of the basic colors of horses. Fill in the blank after the definition with the correct colors that matches the description.

- a. Mixture of white with any other colored hairs, often born solid-colored or almost solid-colored and gets lighter with age as more white hairs appear.

- b. Body color true black without light area: mane and tail black.

- c. Body color ranging from tan, through red, to reddish brown; mane and tail black; usually black on lower legs

- d. Body color reddish or copper-red; mane and tail usually same color as body, but may be flaxen.

- e. Body color brown or black with light areas at muzzle, eyes, flank and inside upper legs, mane and tail black.

- f. Body color yellowish or gold; mane and tail black; black on lower legs; does not have dorsal stripe.

- g. Body color a golden yellow; mane and tail white; do not have dorsal stripes.

- h. Body color yellowish or gold; mane and tail are black or brown; has dorsal stripe and usually zebra stripes on legs, and transverse stripe over withers.

- i. Uniform mixture of white with black hairs over a large portion of the body.

- j. Uniform mixture of white with red hairs on a large portion of the body.

- **Black**
- **Brown**
- **Grey**
- **Red Roan**
- **Chestnut**
- **Dun**
- **Bay**
- **Buckskin**
- **Blue Roan**
- **Sorrel**

Terms

Explain each of the following terms (1 pt each):

Dam _____

Sire _____

Pony _____

Tack _____

Hands _____

Sound _____

Brand _____

Haunches _____

Forehand _____

Pedigree _____

Grade horse _____

Farrier _____

Veterinarian (DVM) _____

Canter/lope _____

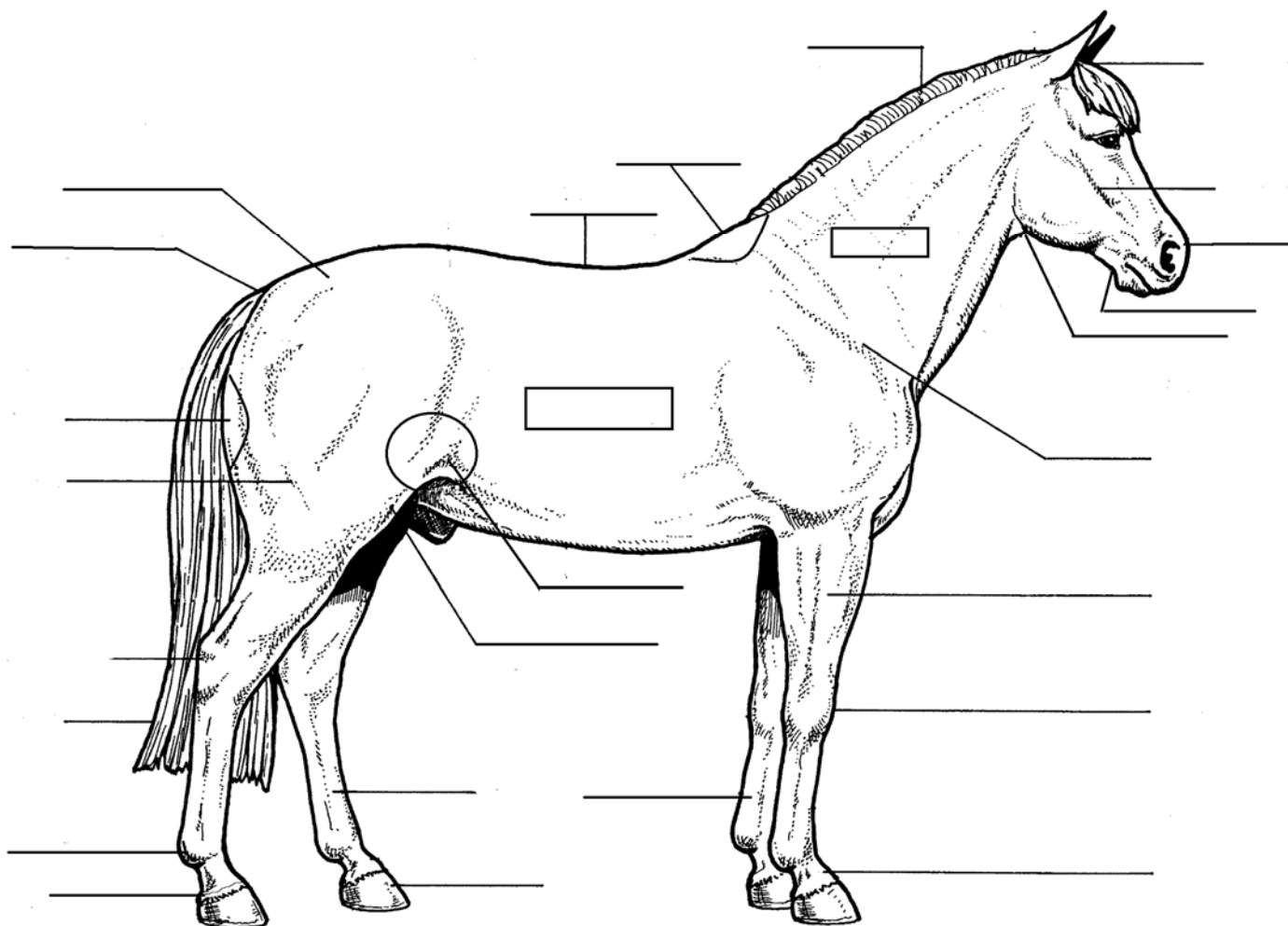
Jog/trot _____

Match the following with the correct explanations: (5 pts)

- | | | |
|-------|--------------------|--|
| _____ | Colic | A. Is a condition that makes a horse/pony lame or damages his ability to do useful work. |
| _____ | Thrush | |
| _____ | Internal parasites | B. Is a condition that is unsightly but doesn't affect his ability to perform. |
| _____ | Blemish | |
| _____ | Unsoundness | C. Is a fungal infection in the frogs of horses that are neglected and allowed to stand in wet, dirty stalls. |
| | | D. Is the number one killer of horses. It can come from gas, cramps, spasms, a blockage or even twisted intestine. |
| | | E. They live part of their life cycle in the horse's digestive tract, sapping his strength and damaging his health . |

Parts of the Horse

Identify 25 parts of the horse (25 pts)



ALLEGAN COUNTY 4-H HORSEMASTER PROGRAM

UNMOUNTED SKILLS

LEVEL TWO

Correctly demonstrate the following skills to a designated leader/resource person who will check off each skill and the dates completed.

UNMOUNTED SKILLS

	Possible	Points
Safely approach & catch a horse or pony with a halter off, in a stall paddock or field	2	
Put on and adjust a halter	2	
Properly lead your horse or pony to your instructor	1	
Demonstrate how to properly tie a horse or pony	3	
Demonstrate how to properly groom your horse or pony on the body, mane & tail	5	
Demonstrate how to pick a horse or pony's hoof (may have assistance)	2	
Demonstrate how to properly bridle your horse or pony (may have assistance)	2	
Demonstrate how to properly saddle your horse or pony (may have assistance)	3	
Demonstrate how to do a tack check	3	
Show how to properly set down a saddle and how you properly store it	2	
Describe your horse's colors and markings	2	
Correctly identify the colors and markings of 3 other horses	2	
Be able to identify 25 parts of the horse per diagram in HM booklet #2	5	

SKILLS DATE: _____ INSPECTOR _____

General Comments

ALLEGAN COUNTY 4-H HORSEMASTER PROGRAM

FEEDING PROGRAM

List what you feed your horse (8 pts)

Grains

- Type: _____
- Quantity: _____

Hay

- Type: _____
- Quantity: _____

Water

- Quantity: _____
- Quality: _____

Supplements and/or minerals

- Type: _____
- Quantity: _____

MAINTENANCE PROGRAM

Explain how you maintain a fit and healthy project animal (exercise, grooming, stable/barn/pasture maintenance, etc.) (5 pts)

How you keep your project animal physically fit. _____

Describe how you house your project animal and how you keep it clean.

What other things do you do to maintain the health of your project animal?

Project Activity Log

Explain activities you and your project animal participate in:

Horse shows, Trail Rides, 4-H Mounted Meetings, Parades, other 4-H Events, etc)

- ---

- ---

- ---

- ---

- ---

- ---

- ---

- ---

- ---

- ---

- # Project Story

[illegible]

LEVEL TWO MOUNTED SKILLS EVALUATION

(Choice of Seat Optional)

Scoring System – 75% passing (with a minimum of 5 on each movement)

1-3 Unsafe - difficulty maintaining control

3-5 Attempt to perform movement but below requirements (Example: wrong lead uncorrected)

5-8 Movement performed with errors, but corrected (Example: leads, diagonals)

8-10 Movement performed correctly to exceptionally well

LEVEL TWO

	Possible	Score
Walk along rail	10	
Trot/jog along rail	10	
Circle at a trot/jog	10	
Trot/jog balancing two-point position	10	
Halt from a trot/jog (pausing for 10 seconds)	10	
Lope/canter left lead	10	
Break to a walk	10	
Reverse on the haunches (180 degree turn) continue to walk	10	
Trot/jog figure eight	10	
Lope/canter right lead	10	
Stop back 5 steps along rail	10	
Weave at a trot through 4 cones	10	
Trot over 4 ground poles	10	

ADDITIONAL SCORING

Subtle use of aids	10	
Submission of horse to rider	10	
Correctness of position	10	
Balance and collection	10	
Overall safety awareness	10	

Total (180) _____

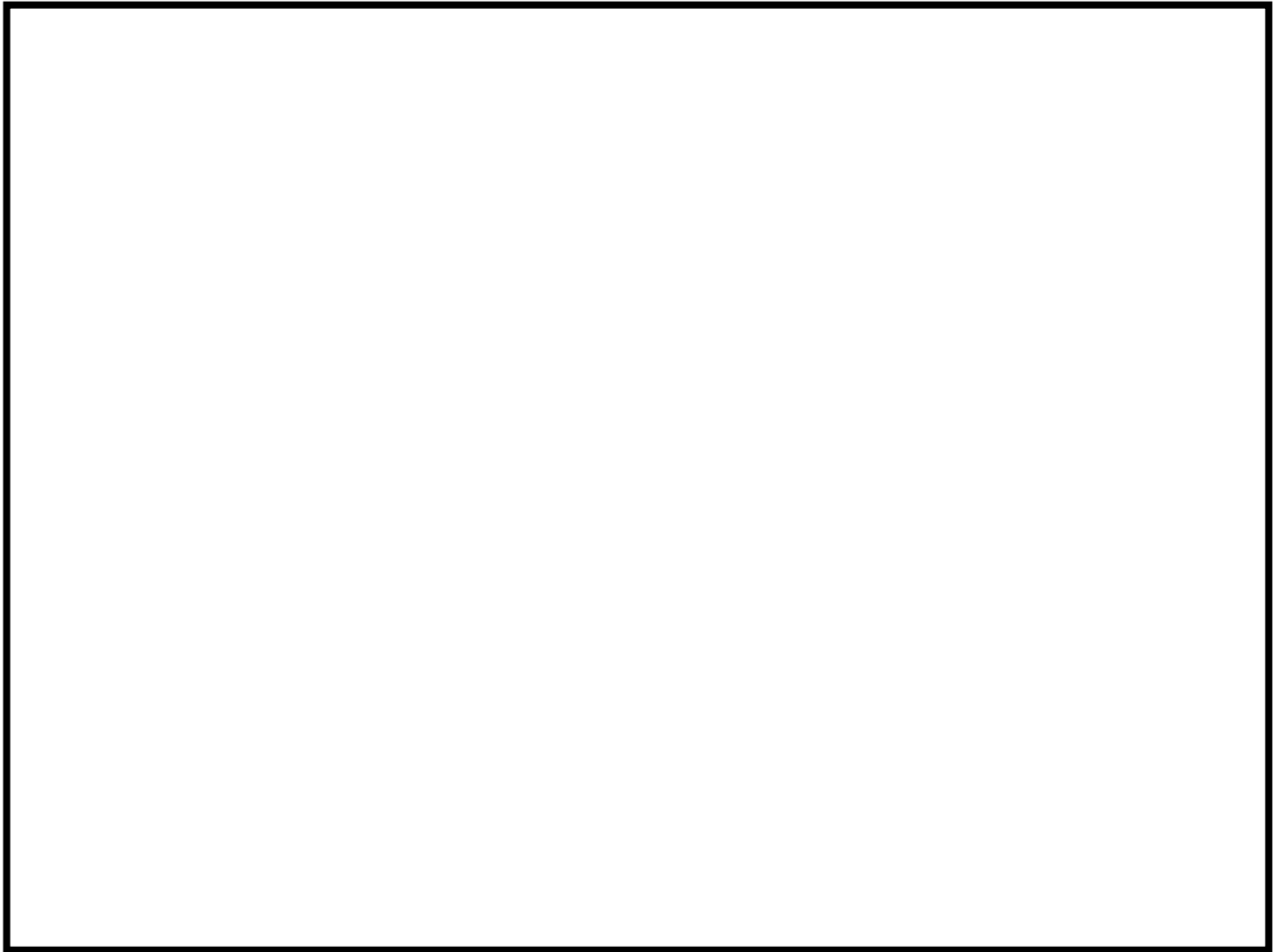
General Comments of overall ride (may make suggestions for improvement)

Evaluator's Signature _____ Date _____

Enclose a picture of you and your project animal.

Name of Rider _____

Name of Horse or Pony _____

A large, empty rectangular box with a thick black border, intended for a photograph of the rider and their project animal.